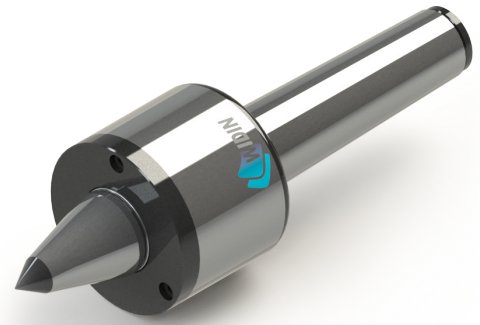
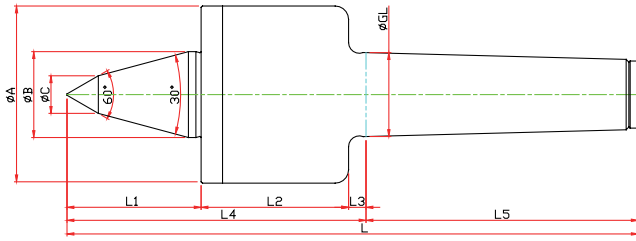


SMPBC-TYPE

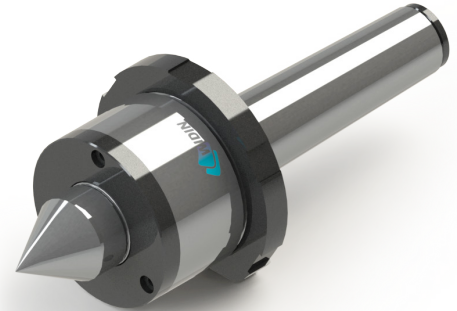
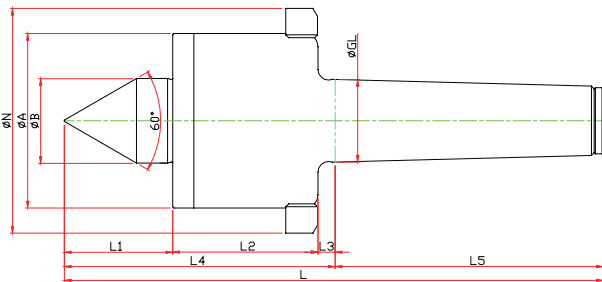
※ SHAFT 확장(바이트 간섭 최소화) SHAFT EXTENTION(Minimize the bite-interference)
 ※ 초경타입 Carbide Type



Model	Order Number	Morse Taper	Dimension											Weight MAX.	R.P.M MAX.	Run Out
			GL	A	B	b	L1	L2	L3	L4	L5	C	L			
LC-3SMPBC	051103	NO.3	23.825	52	22	10	40	51	5	96	81	10	177	160	12000	0.003
LC-4SMPBC	051104	NO.4	31.267	66	32	14	50	55	6.5	111.5	101.5	14	213	520	10000	0.003
LC-5SMPBC	051105	NO.5	44.399	82	40	16	65	75	6.5	146.5	129.5	18	276	940	8000	0.005

SMPN-TYPE

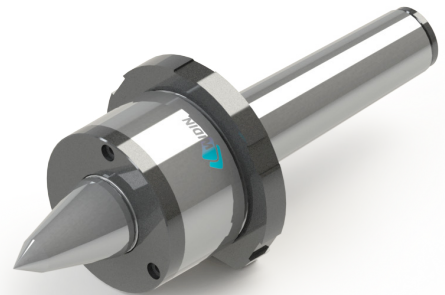
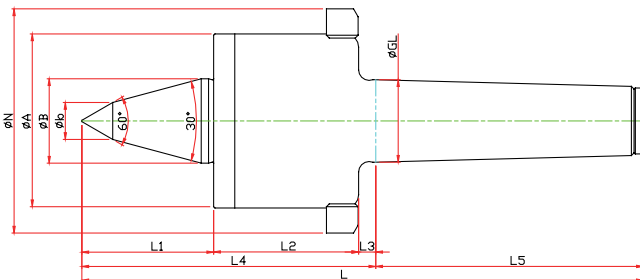
※ 너트타입 Nut Type



Model	Order Number	Morse Taper	Dimension										Weight MAX.	R.P.M MAX.	Run Out
			GL	A	B	L1	L2	L3	L4	L5	N	L			
LC-3SMPN	050013	NO.3	23.825	52	22	30	51	5	86	81	70	167	330	12000	0.003
LC-4SMPN	050014	NO.4	31.267	66	32	41	55	6.5	102.5	101.5	85	204	1100	10000	0.003
LC-5SMPN	050015	NO.5	44.399	82	40	51	75	6.5	132.5	129.5	105	262	2200	8000	0.005

SMPBN-TYPE

※ SHAFT 확장(바이트 간섭 최소화) SHAFT EXTENTION(Minimize the bite-interference)
 ※ 너트타입 Nut Type



Model	Order Number	Morse Taper	Dimension											Weight MAX.	R.P.M MAX.	Run Out
			GL	A	B	b	L1	L2	L3	L4	L5	N	L			
LC-3SMPBN	051013	NO.3	23.825	52	22	10	40	51	5	96	81	70	177	160	12000	0.003
LC-4SMPBN	051014	NO.4	31.267	66	32	14	50	55	6.5	111.5	101.5	85	213	520	10000	0.003
LC-5SMPBN	051015	NO.5	44.399	82	40	16	65	75	6.5	146.5	129.5	105	276	940	8000	0.005